

# LEVEL GAUGES



## Float & Board 131

### Product Features

- Wetted parts available in SS304 / Ss316.
- Suitable for installation on "Tank in Service"
- Large numerals visible from a distance
- Simple installation and commissioning
- Liquid seal for trap vapour for highly evaporating material
- Indicator rolls on gauge board with the help of nylon rollers
- Supplied with all installation accessories
- Floats of various materials & sizes are available to suit specific requirements

### Applications

- Top mounted version designed specifically for sump application is available
- Number of configurations to suit various tanks underground & above ground, Cone Roof, Sump, Floating Roof, Horizontal Cylindrical, Reservoir, etc.

### Specifications

- **Float Diameter:** 300 or 400 mm.
- **Process Connections:** 1 1/2" threaded / Flanged
- **Tank Height:** Suitable for 2 to 20 mtr.



## Float & Tape (ATLG) Based Tank Gauging System

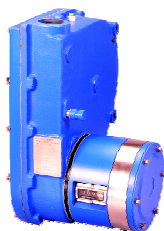
### Product Features

- Level Measurement for Petroleum storage tanks in Refineries, Marketing Terminal or Oil storage tanks, Fire Water Tanks
- Accessories for remote Control / Indication
- Solutions for Level measurement of clear liquids in large bulk storage tanks ( Cone Roof, Floating Roof, Underground )
- **Mounting:** Side or top
- **Ranges:** 0-8 m, 0-12 m, 0-16m, 0-24 m
- **Resolution:** 1 mm
- **Accuracy:** ± 2 mm with 400 mm dia. float

### Automatic Tank Level Gauge (133ATLG)

#### Accessories

- **Limit switch assembly (133LA)**  
Switches (2 point or 4 point)
- **Two wire transmitter (133TS)**  
4-20 mA proportional to level
- **Smart Tank data Transmitter (133STDT)**  
Transmission of level & temperature data
- **Liquid seal assembly (133LS)**  
For blanketed tanks
- **Communication Interface Unit (CIU)**  
Control room unit for communication with the tank level gauges
- **Tank farm Management Software (SBTFMS)**  
Versatile Inventory Management programme



## Servo Operated Tank Gauging System

### Product Features

- Accurate Level, interface level, temperature & density measurement in one instrument.
- Useful for automation in Refineries, Marketing Terminal /depots — Storage Tanks Strategic Reservoirs, Caverns.
- LPG Servo Gauge for Level, Temperature Measurement for Spheres & Bullets.
- Display at Local, at Grade Level, Remote possible
- Hybrid Servo Gauge provides Online Density Measurement.
- RS 485 Communication for Communication Interface Unit (CIU) & SBTFMS software for inventory report, trends, alarm monitoring
- SIL - 2 Certified current & Relay output.

### Servo Gauge (139 M)

#### Accessories

- **Portable programming Unit (139PPU)**  
For programming of Servo Gauge
- **Calibration chamber (139CC)**
- **Tank side Indicator controller (139TSIC)**  
Visual indication of level and volume at tank side
- **Communication interface unit (133CIU / 133RCU)**  
Control room unit for communication with the tank level gauges (133 CIU with CMA supervisor systems on standard modbus protocol)
- **Average temperature indicator (133TMP)**  
For measurement of temperature
- **LPG Servo Gauge**
- **Tank Inventory Management Software (SBTFMS)**  
Versatile Inventory Management programme
- **Custody Transfer Approval :**  
Weight & Measures as per OIMLR85 standard.



# LEVEL GAUGES

## Magnetostrictive Level Probe 134TM with Fill Point Indicator 134H/134FPI For ALDS (Automotive LPG Dispensing Stations)

### Product Features

- Reliable and accurate level and interface level measurement in underground and above ground horizontal cylindrical tanks
- Applicable for pressurized / atmospheric storage tanks containing LPG, motor spirit, high speed diesel, superior kerosene etc
- Remote Indicator - Transmitter enables display of level, interface level, volume, % volume at the fill point.

### Applications

- 100 point strapping table for volume indication
- Flameproof and weatherproof enclosure
- Intrinsically safe probe
- Fill point indicator, 134 FPI for viewing the tank data at fill point
- Up to 4 tanks can be grouped and connected to one Fill Point Indicator
- **Sales Room Indicator, 134 SRI** helps viewing tank data in control room
- Up to 8 tanks (two groups of 4 each) can be connected to one 134 SRI
- Optional SMS facility - Tank data at regular intervals, alarm conditions

### Specifications

- **Accuracy:** +/-1mm
- **Resolution:** +/-0.1mm
- **Pressure:** Upto 16 kg/cm<sup>2</sup>
- **Temperature:** 25 to 100°C
- **Measuring Range:** up to 3 m
- **Density Range:** 0.45 to 1.2gm/cc
- **Protection:** IP67



## Tank Farm Management System, SBTfMS

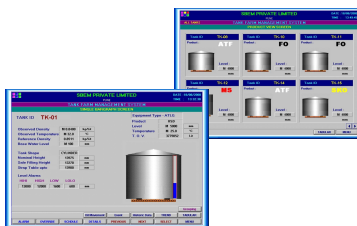
Tank Farm Management System Software package is a powerful and versatile inventory management programme for bulk storage tanks for refineries and marketing of petroleum products.

### Product Features

- Real time tank gauging data such as level, temperature, water interface and pressure
- Real time inventory calculations
- Liquid and mass calculations of vapor in LPG
- Volumes are calculated as per strap table entry. Cylindrical and spherical tanks are also supported.
- Reliable alarm handling - Receive alarm summary, alarm log and alarm event log
- Leakage alarms
- Reports - Schedule report times. Reports may be saved as pdf.
- Historical data storage
- Audit log for events
- Tank & Group views
- Numerical & graphical displays
- System capability up to 128 tanks through 2 Communication Interface units & 200 tanks with up to 4 Communication Interface Units.

### Applications

- Refineries
- Independent Tank terminals
- Marketing Terminals
- Fuel Depots
- Pipeline terminals
- Petrochemical Industry
- Bio fuel storage
- Aviation Fuel Depots



## Lube Oil Customised SCADA Development

### Product Features

- Monitor tank farm up to any no. of tanks
- Display of Level / Volume (with the help of strapping tables which relate the liquid level to volume)
- Display of mass ( manual entry of density )
- Display of temperature
- Easy installation - Narrow beam Pulse Radar, 138K56 allows installation practically anywhere in the tank
- Proven in various industrial environment
- Graphical Display  
Single tank at a time with all parameters data. Selection of Tank No. to view a particular tank data
- Data logging and Trending
- Operator friendly software
- SMS Alerts ( Time / Event Driven)

